

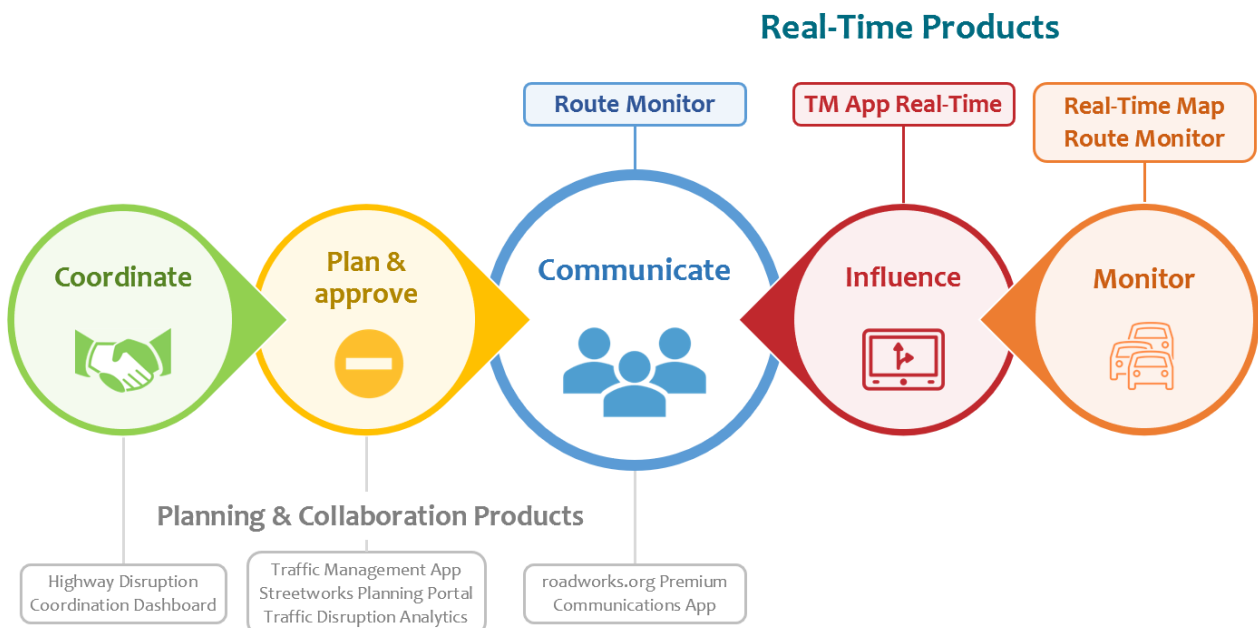
[roadworks.pro Real-Time](#) is the next generation virtual traffic management centre.

It is a suite of products which extends the [roadworks.pro](#) platform into the realm of live congestion monitoring, real-time traffic management and direct influence over driver behaviour through live sat-nav updates.

It provides better visibility, and where possible advance warning, to Traffic Control Centre, streetworks and network planning officers about issues on the road network, and offers more accurate and timely information to the travelling public

<p>Real-Time Map</p>	<ul style="list-style-type: none"> ○ Monitor live traffic conditions ○ Identify the cause of traffic jams to inform response strategies
<p>Route Monitor</p>	<ul style="list-style-type: none"> ○ View traffic status of key routes at a glance ○ Receive alerts when traffic issues occur on key routes
<p>TM App Real-Time</p>	<ul style="list-style-type: none"> ○ Manage road closure information in real-time ○ Control live updates to sat-navs to influence driver behaviour

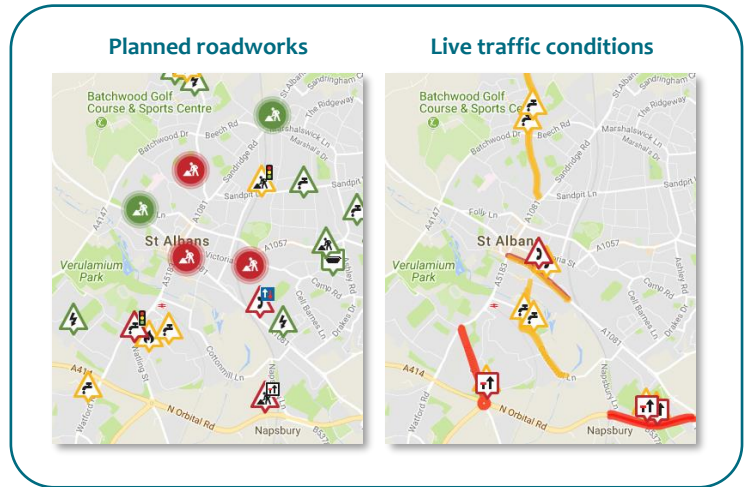
With the addition of the Real-Time product suite, roadworks.pro provides a single platform for the coordination, planning, communication and monitoring of traffic disruptions.



Real-Time Map

Real-Time Map is a “map dashboard” highlighting severe and unusual congestion. It is a decision support tool for traffic control centre users, streetworks professionals and public event organisers.

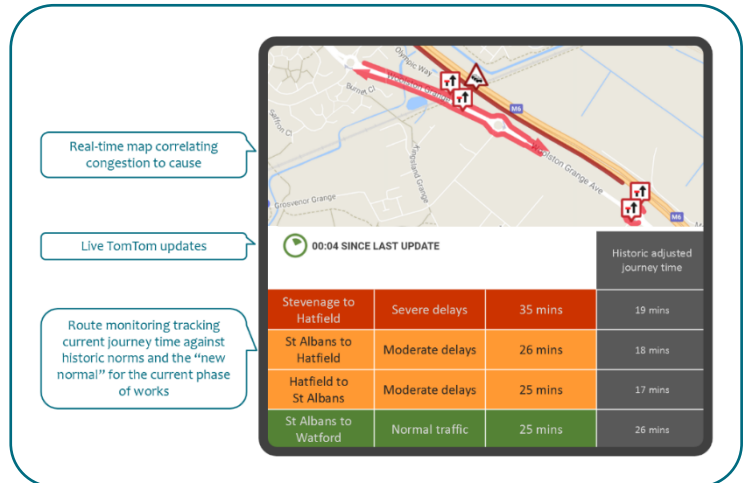
- Coverage: national and cross-boundary
- Toggle between view of actual traffic conditions and planned disruptions
- Relate severe or unusual congestion to its cause (e.g. roadworks)
- Integration of VMS, CCTV, car park availability and other UTMC data sources



Real-Time Route Monitor

Route Monitor is tool for monitoring and communicating the performance of key routes with no requirement for physical sensors such as ANPR.

- Display key route journey times to operators and the public
- Monitor and communicate journey times through major schemes
- Receive network performance alerts
- Analyse key route performance over time
- API feed to UTMC / VMS



TM App Real-Time

Traffic Management App operating in Real-Time mode enables highway authority officers and contractors to instigate live communication of road closures to sat-nav service providers.

- Influence drivers in real-time, reducing traffic jams
- Increase road user satisfaction with highway authority information
- Simple web app for use at the roadside

